



Heysea Yacht Group Limited

Website: [www.heyseayachts.com](http://www.heyseayachts.com)

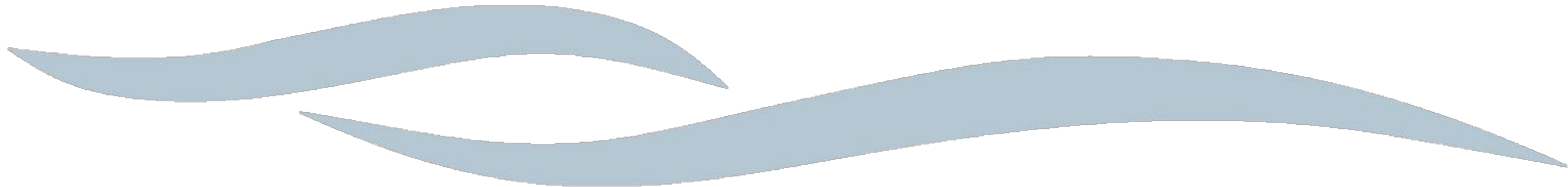
Email: [sales@heysea.com](mailto:sales@heysea.com)

# ASTERIA 142

— Built by Heysea







# ASTERIA 142

— Built by Heysea





# DYNAMIC DESIGN UNPARALLELED ELEGANCE

Designed by the internationally renowned Italian design studio VYD; perfected thanks to a very close cooperation of experienced yacht owners and captains; and built by one of the fastest advancing yards in the world - Welcome to the Asteria 142.

Joining the line as HeySea's newest model, Asteria 142 is the result of the international collaboration of yacht designers, owners, captains and boat builders - bringing together yacht experience of more than 100 years. Perfected for tropical environments and with outstanding seakeeping capabilities this is HeySea's entrance to the international yacht stage.

With several yachts in construction and the first launch scheduled for 2020, we would like to invite you to an exclusive tour onboard HeySea's new flagship: The Asteria 142







**Owner private exterior area**

**Owner's Cabin**  
The private sanctuary onboard your private sanctuary

**Side tender garage**  
Space for jet skis, toys and tender

**Cabana**  
Hampton-style pool house meets Miami beach bar

**Full height window**  
Enjoy the light from the large full-height window

**VIP Cabin**  
A retreat worthy a sultan

**Jacuzzi**  
Flush with the deck and a stunning view over the bow

## PROFILE VIEW

Elegant, Unique and Timeless. From the first stroke to the final 3D model, Asteria 142's exterior was designed to embody the gracefulness of a queen, the uniqueness of a rough cut diamond and the timeless ever-changing beauty of mother nature. Paying attention to every detail her long, elegant lines hide a such voluminous and comfortable interior; large windows and glass handrails make her sparkle in the sun; and her forward leaning bow and superstructure represent her urge to explore the world.

The perfect balance of open deck space and unique interior, and the commitment to comfort and openness have resulted in a yacht suitable for every occasion and guaranteed to give you pleasure every minute on board.



# ASTERIA 142









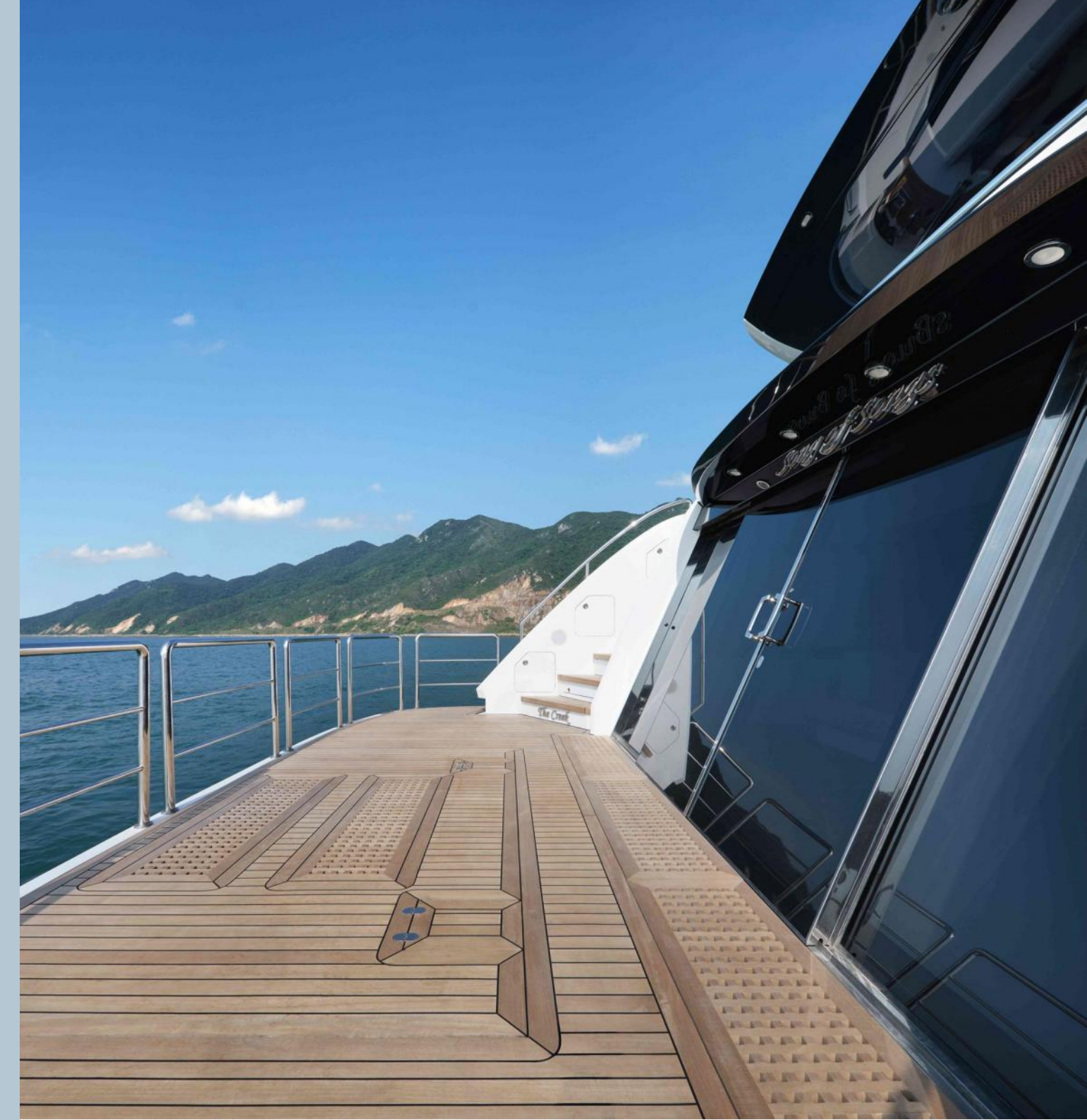


## CABANA

Best described as a combination of Hampton-style pool house and Miami beach bar, 142's Cabana is an all-round entertainment area.

Designed as a designated wet area away from the dry interior, it is perfect for a day in the water - be that a swim with your children or cruising on the jet skis with your friends.

With its own food preparation area and day head and located right next to your side tender garage full of toys, time will fly past.







## FOREDECK

Designed to maximize space and comfort, the yacht's massive foredeck is the ideal location to see and be seen. A comfortable couch, large sunbeds and a Jacuzzi flush with the deck make it a multi-purpose entertainment area. Located well above the water it offers a panoramic view and from inside the Jacuzzi you have an unobstructed, infinity-pool like view over the bow..







## AFTDECK

Styled to perfection both interiorly and exteriorly by Italy-based VYD Studio, HeySea Asteria 142 is visionary in her design.

The aft deck area serves as an excellent extension to the interior, ideal for family breakfasts, board games, or engaging conversations among friends.







## FLYBRIDGE

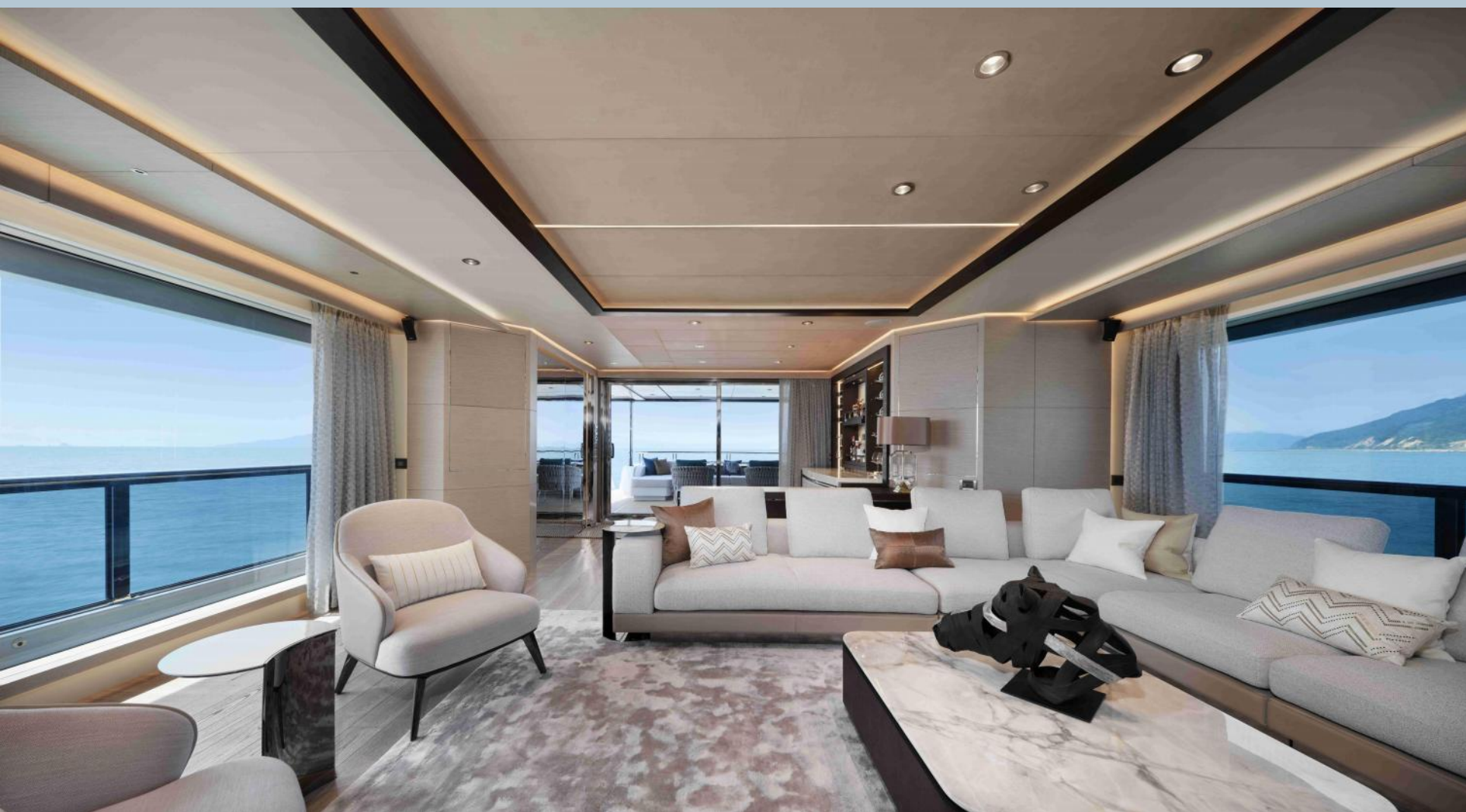
Family breakfast or formal dinner, cigars with friends or cocktail party, watching the sunrise or sleeping under the stars; with its massive area, well-thought out flexible design and visible attention to detail the flybridge has it all. If you want to relax in the sun, go and lie on one of the lush lounges at the aft and take in the breathtaking view - thanks to the top to bottom glass handrail; if you prefer a cool drink in the shade take a seat at the bar protected by the hardtop (retractable sunroof optional) and ready to serve your favorite beer at the perfect temperature; and if clear night skies ask for a romantic evening, lie down on the comfortable lounge island and scarch for Venus.









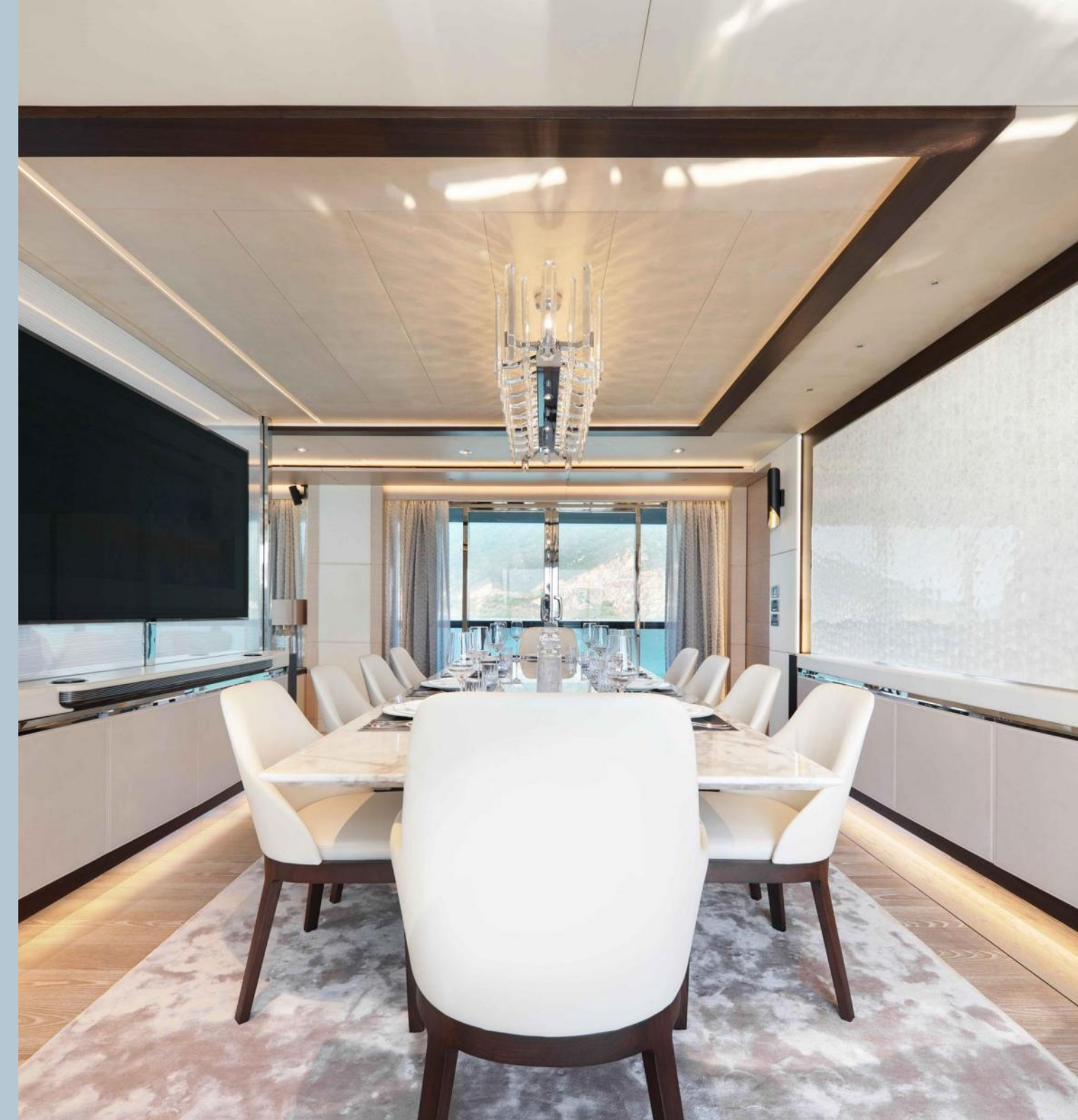






## SALON

With the hallway moved to the starboard side and a clear separation of crew and passenger areas, the salon is split into a dining and living room. The full-height windows and a glass bulwark flood the salon with natural light and remove any boundaries between the guests and the sea; large sliding doors on three sides create a seamless transition from aft deck to the living room; and the stylish modern looking wall bar located in the middle serves your favorite drink both inside and outside.









## OWNER CABIN

Surrounded by glass on three sides and featuring everything from a dining table to a sofa bed, owner cabin's limits are only set by your imagination. Five meters above the water and with a clear view aft sailing away from the sun might become more exciting then sailing into it; and with the bed height tailored to your needs and a custom ordered mattress a night's sleep will feel like a week in bed.







HeySea











## VIP CABIN 1

With its own designated office space, a lush couch area and comfortable reading book, this yacht's VIP Cabin 1 can easily be mistaken for the best cabin on board. Far away from communal areas and with its own luxurious marble-covered bathroom and a spacious walk-in wardrobe, the cabin is a perfect retreat for close family members, good friends and important guest.







## VIP CABIN 2

The VIP cabin 2 is this yacht's third cabin featuring a walk-in wardrobe, lounge area and designated office space. Designed with meticulous detail - from hotel-style luggage rack, to storage space underneath the beds - the cabin's warm and elegant ambience welcomes guests onboard.

Lit-up by natural light through its large windows and decorated in the finest leather and warm, rich-colored oak from Italy, only the subtle sound of waves will remind your guests they are on the sea.







## GUEST CABINS

Accommodating an additional six guests the three ensuite cabins have been styled in a modern yet timeless design.

The hotel-like ambience, custom-built beds and mattresses and the perfectly positioned mirrors make these cabins seem spacious and comfortable - ensuring every guest will feel welcome onboard your yacht and leave it with the longing for more.







## GALLEY

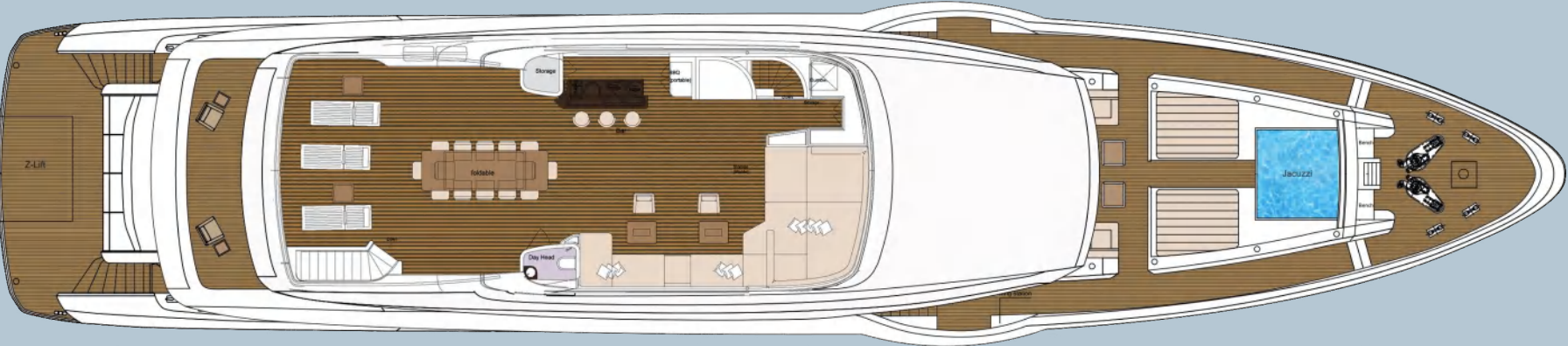
Designed to rival most modern house kitchens and built to perform at restaurant standards the galley onboard Asteria 142 is the dream of every chef. Be it midnight snack or a cocktail party for 40, this galley can cater for every occasion.

Equipped with state-of-the-art appliances the layout was designed with painstaking detail and attention to human ergonomics. With separate areas for dishes, food preparation, cooking and plating several people can work at the same time; the abundance of dry storage and six full-height fridge freezers ensure a great degree of autonomy when planning your holiday; and a separate onboard wine cellar allows for a selection to pair every dish with the perfect wine. If you are not convinced yet, let us tell you about the dumb waiter. Minor details like the use of deep drawers or that special cavity designed behind the fridges to optimize heat-flow - which simply translates to: a cold beer is a cold beer.

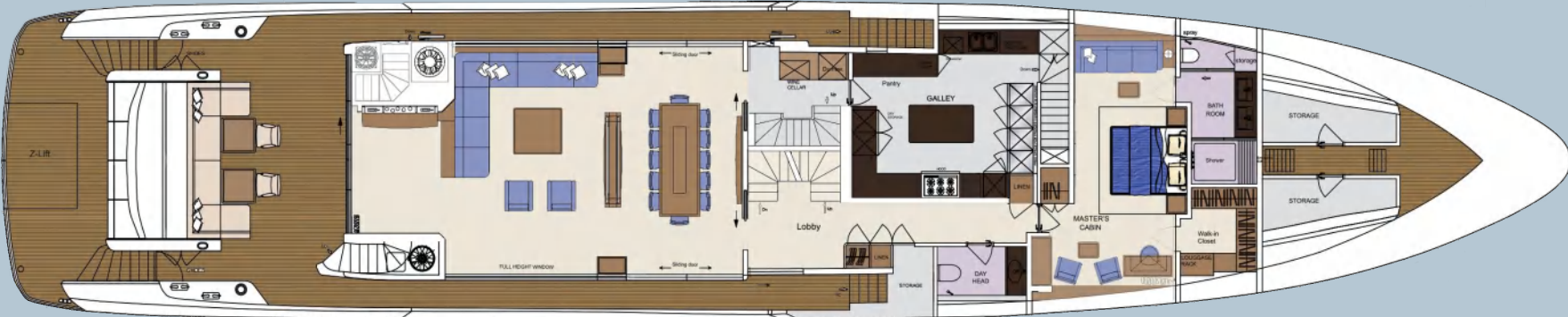




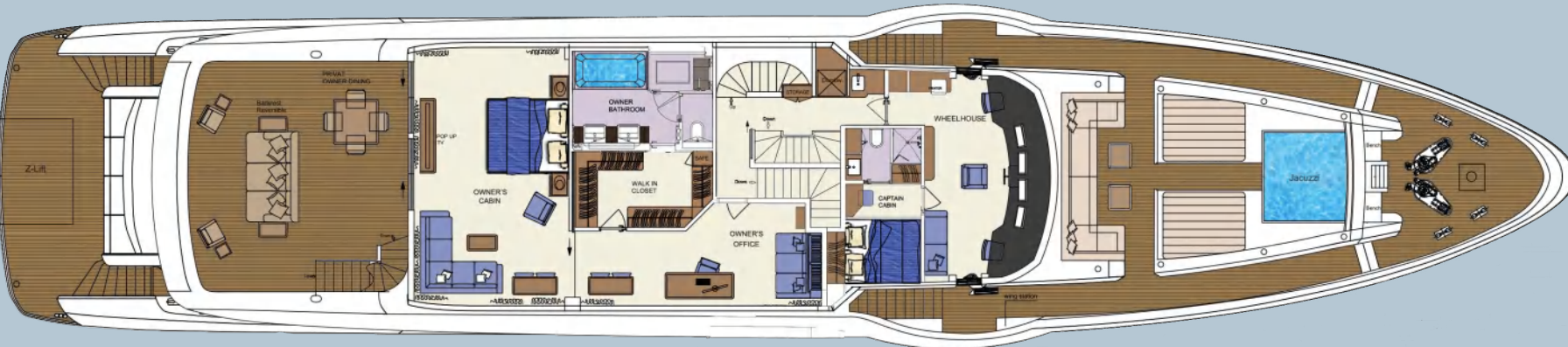
SUN DECK



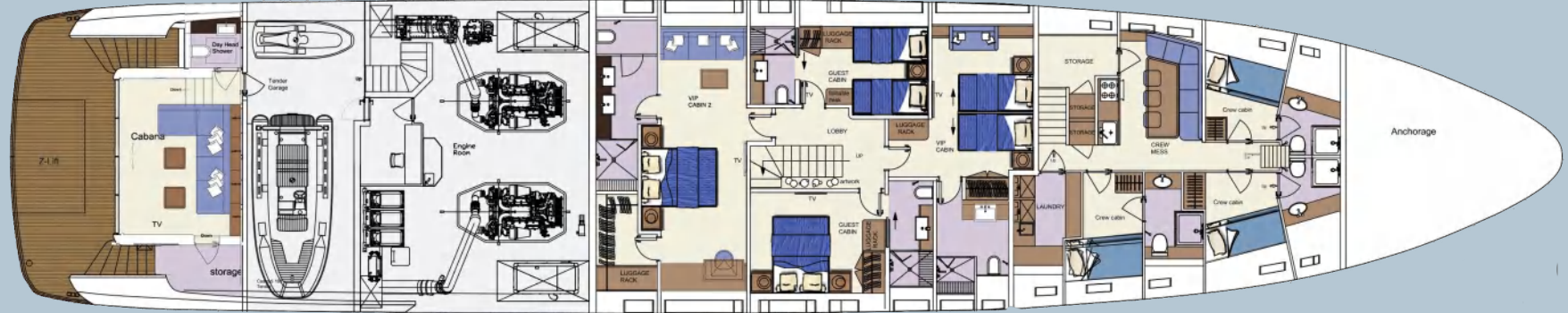
MAIN DECK



UPPER DECK



LOWER DECK





# SPECIFICATION

Length overall:	43.27m (142')
Length waterline:	39.92m (131')
Beam:	8.5m (27'89")
Draft:	Full load to BL: 2.05m (6'73") Half load to BL: 2.00m (6'57")
Speed:	Max @ half load: 17kn Cruising @ half load: 14kn
Range:	2000NM @10kn
Gross tonnage:	Appr.450
Guest:	12
Crew:	8
Tender [owner supplied]:	Max length: 4.9m (16')
Displacement:	Full load: 286.4t Half load: 272.8t
Tank capacity:	Fuel oil: 26,300l (6948 US gallon) Fresh water: 5,000l (1321 US gallon) Black water: 2,000l (528 US gallon) Grey water: 1,380l (364 US gallon)
Material for hull and superstructure:	FRP
Main engine [standard configuration]:	2xCAT C32 Acert 1900hp
Propeller:	2x 5 Blades
Generator:	2x Kohler 125kW
Bow thruster [stern thruster optional]:	Side Power-SH1000/513TC-BA90
Shore power converter:	100kVA
Stabilizer:	CMC,zero speed, 2 fins
Z lift:	Ocean Stainless, 1000kg
Air conditioning:	Climma
Classification:	RINA pleasure,unrestricted navigation
Flag:	Cayman Islands
Builder:	Heysea Yachts
Exterior and interior design:	VYD





# ASTERIA 142

